

ASBESTOS INFORMATION

Home renovators need to ensure their health is protected, as well as that of their children and neighbours. Ensure you manage the risks associated with working with asbestos around your house and property.

1. Definition of Asbestos

Asbestos is a naturally occurring rock mineral. It is very durable and has excellent fire resistance and insulating properties.

Asbestos was widely used during the 1940s to 1990s in household and industrial products such as fibre cement pipes, wall panels and roof sheeting. It was also used in mechanical and mining industry products such as brake disk pads and gaskets.

The three main types of asbestos are **white, brown and blue**. Australia banned manufacturing, importing and installing products containing blue and brown asbestos on 31 December 1984.

The use of white asbestos was banned from 1 January 2004. However, buildings may still contain asbestos in many different forms.

2. Removal

You can remove asbestos from a property you own, it is not illegal to do so. However, you are strongly advised not to, unless

- you have access to an approved asbestos vacuum cleaner suitable for capturing microscopic asbestos fibres that will be released during asbestos removal; and
- you have had training and are experienced in safe removal practices.

You must consider your health and safety if you are considering undertaking asbestos removal. In addition, you must also consider the health and safety of other people in the area, including children and people on neighbouring properties. These people may be exposed to asbestos fibres released during removal works.

In line with *Safe Work Australia's Code of Practice "How to Safely Remove Asbestos"*, July 2020, you can remove without a licence

- up to 10m² of non-friable asbestos ¹or Asbestos Containing Material (ACM²); and
- Asbestos Contaminated Dust or Debris (ACD³) that is
 - associated with the removal of less than 10m² of non-friable asbestos or ACM and
 - not associated with the removal of friable or non-friable asbestos and is only a minor contamination.

¹ **Friable asbestos** means material that is in a powder form or that can be crumbled, pulverized or reduced to a powder by hand pressure when dry, and contains asbestos.

² **ACM** (Asbestos containing material) means any material or thing that, as part of its design, contains asbestos.

³ **ACD** (Asbestos-contaminated dust or debris) means dust or debris that has settled within a workplace and is (or is assumed to be) contaminated with asbestos.

Where is asbestos in my home?



Asbestos cement sheet cladding on eaves.



Cement roofing and gutters



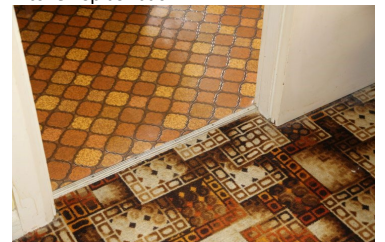
Asbestos cement panel



Kitchen splashback



Asbestos contained sheeting and adhesive behind tiles



Asbestos contained adhesive under vinyl and carpet

Examples where a licence is not required to perform asbestos removal work:

- A single asbestos cement sheet must be removed to install an air conditioner. The sheet is 2m² in total. This job may be performed by a company that is not a licensed asbestos removalist, observing the requirements outlined in the *Code of Practice* in Chapter 4.
- A self-employed person is required to remove an asbestos cement eave to enable access to pipes. The asbestos cement eave is 1.6m² in total. This job may be performed by a self-employed person who is not a licensed asbestos removalist, observing the *Code of Practice* in Chapter 4.

3. Disposal

The asbestos holding bin is located at the **Scamander Waste Transfer Station (WTS)**, Coach Road, Scamander TAS 7215.

This bin can only be accessed during normal opening hours:

Tuesday	10 am to 4 pm
Thursday	10 am to 4 pm
Sunday	2 pm to 5 pm



Example of asbestos bin at Scamander WTS

No disposal will be accepted without prior arrangement and approval from the Council.

Please contact Council on **Phone 6376 7900** to make arrangements.

The following conditions must apply:

Asbestos: Asbestos will only be accepted when it is securely double wrapped in builders' plastic and sealed with tape. If there is asbestos exposure detected on delivery, the client will be refused entry by Council's Works Department representative.



Example of asbestos double wrapped.

Charges: Disposal of asbestos **\$73.60 per m³**. *(2024/2025 Fees & Charges)*

Finding more information on identifying asbestos in your home by visiting the Australian Government Asbestos Safety and Eradication Agency www.asbestossafety.gov.au

Use the QR code to navigate to the agency website

