



# St Marys Multi-purpose and Evacuation Centre Signage Artist Brief



Version: 1 – Date: October 2024

## PROJECT DETAILS

St Marys Multi-purpose and Evacuation Centre Signage	
ORGANISATION	Break O'Day Council
BUDGET	\$7,500
ARTWORK SPECIFICATIONS	Approx: 10 x 4m (See appendix)
ARTWORK MATERIALS	Board that can be affixed with screws to the building
SUBMISSION CLOSING DATE	22 November 2024
DELIVERY OF ARTWORK DATE	27 January 2025
CONTACT	<a href="mailto:Jayne.richardson@bodc.tas.gov.au">Jayne.richardson@bodc.tas.gov.au</a>

## BACKGROUND

In 2019 The Fingal Valley communities experienced a serious bushfire which resulted in the Break O'Day Council being eligible for funding through the Black Summer Bushfire Program. With this funding the Council has built a new indoor, Multi-purpose and Evacuation Centre in St Marys. This building will be called the St Marys Multi-purpose and Evacuation Centre.

The new facility is located at the Sports Complex, located at 2 Gray Road, St Marys. (See below)

This facility will be largely used as a multi-purpose facility with the capability to be stood up in an Emergency situation.

The building houses changerooms and amenities for the local sporting clubs as well as a gym. It also has a commercial kitchen and plenty of room to store bedding and emergency management equipment.



## THE BRIEF

Council would like an artist to work with us and the St Marys community to create an artwork for the building. This artwork will identify the building as well as feature elements inspired by the St Marys and Valley communities.

The artwork will need to be produced on a panel or series of panels that can be affixed to the building. This means that both the paints and the panels must be all weather appropriate.

Approximate dimensions for the artwork are noted above.

## COMMUNITY ENGAGEMENT

Council staff will work with the successful artist to run a community workshop where we can ask the community for ideas for the artwork. This will be done via butchers' paper and sticky notes.

Once this input has been gathered, Council staff will collate the community's ideas and present this information to the artist for consideration and inclusion in their artwork.

## ASSESSMENT

A panel comprised of two staff members and two Councillors will assess all EOI submissions.

Assessment will be made against responses to the Selection Criteria by giving a score out of 5, 1 being the lowest and 5 the highest.

We will give a 7% preference to artists from the Break O'Day area.

Neither the lowest nor any submission will necessarily be accepted.

## TIMELINE

DATE	ACTIVITY
<b>28 October 2024</b>	EOI Advertised
<b>22 November 2024</b>	EOI submission period closes
<b>26 November 2024</b>	Assessment of EOIS
<b>28 November 2024</b>	Artist appointed
<b>9 December 2024</b>	Start of community consultation
<b>27 December 2024</b>	Artwork development period (4 weeks)
<b>Monday 24 January 2025</b>	Sign/artwork completed
<b>Monday 27 January 2025</b>	BODC takes possession of sign
<b>Friday 7 February 2025</b>	Sign Installed



## SELECTION CRITERIA

### About you

Please provide us with a 300 word blurb on yourself that includes your relevant experience in producing an artwork of this nature.

### Examples

Please provide us with at least two examples of your artwork.

### Why does this project interest you?

Please provide us with 300 words on why you are interested in making a submission for this project.

### Testimonials and References

Please provide us with two testimonials from previous clients that highlight your ability to deliver a project on time and on budget. Please also provide contact details for your referees so we can contact them if required.

### Budget:

Please include your costs.

## APPENDIX







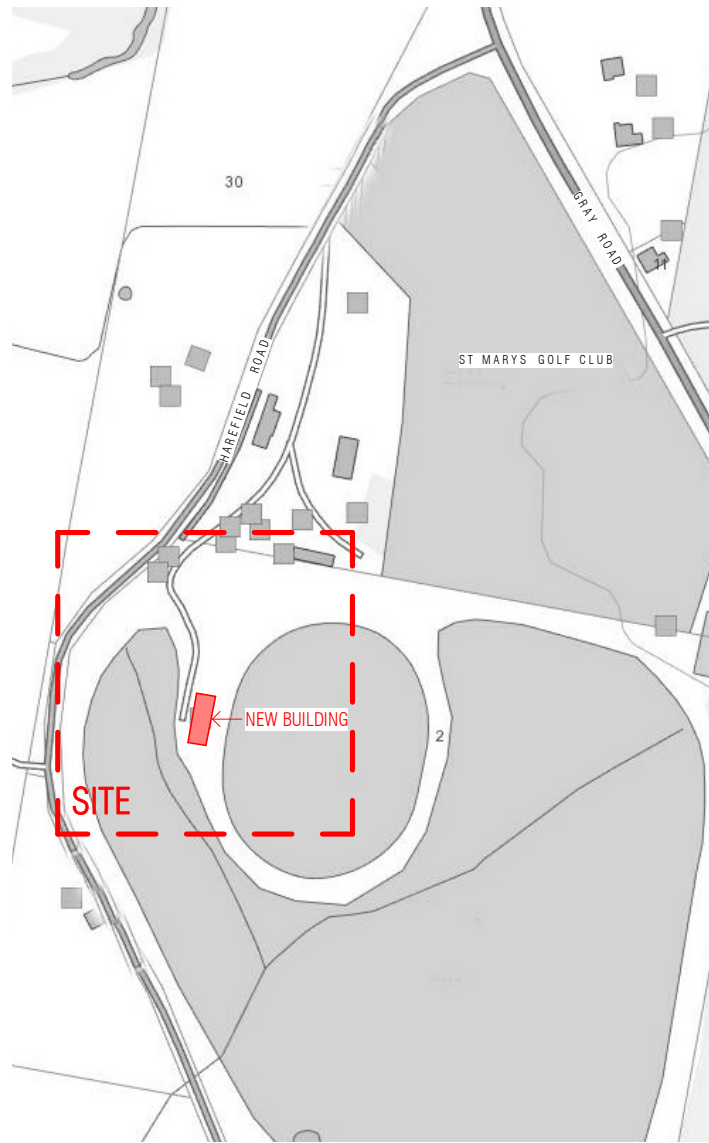












01 LOCATION PLAN  
SCALE 1 : 5000



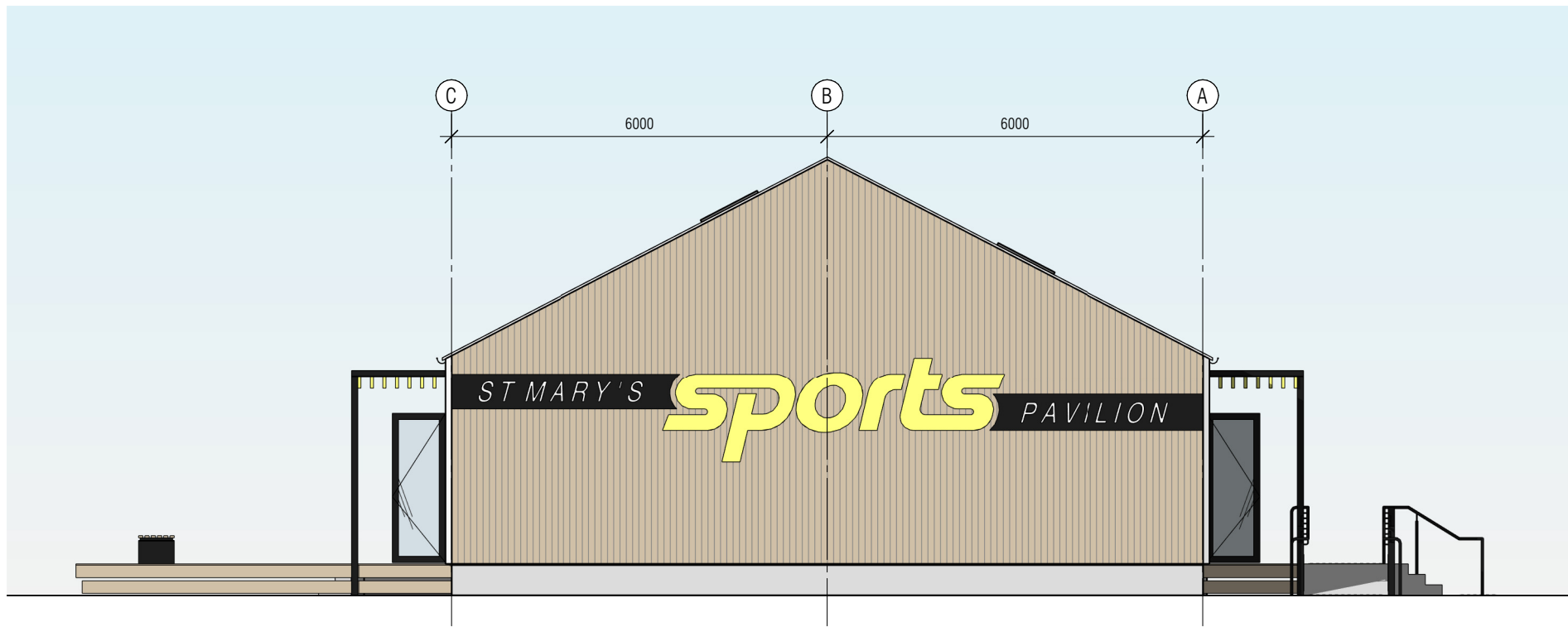
02 SITE PLAN  
SCALE 1 : 750







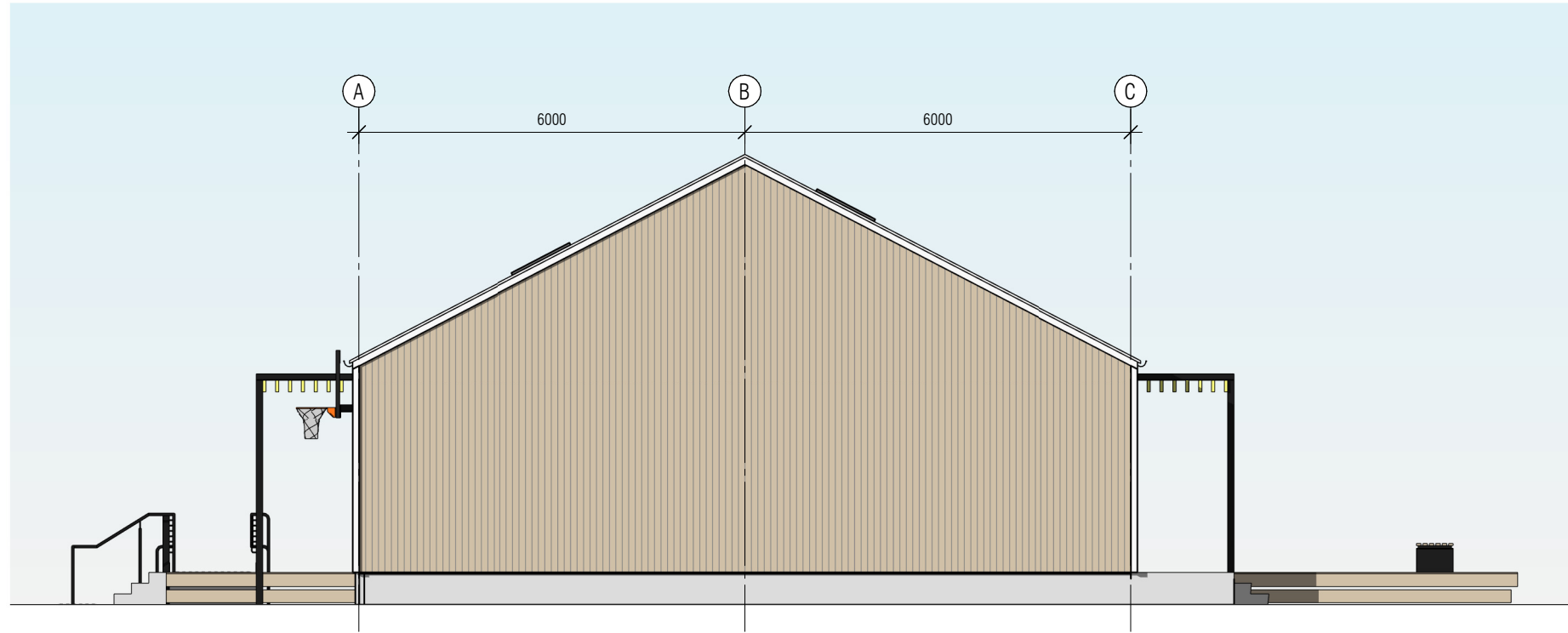




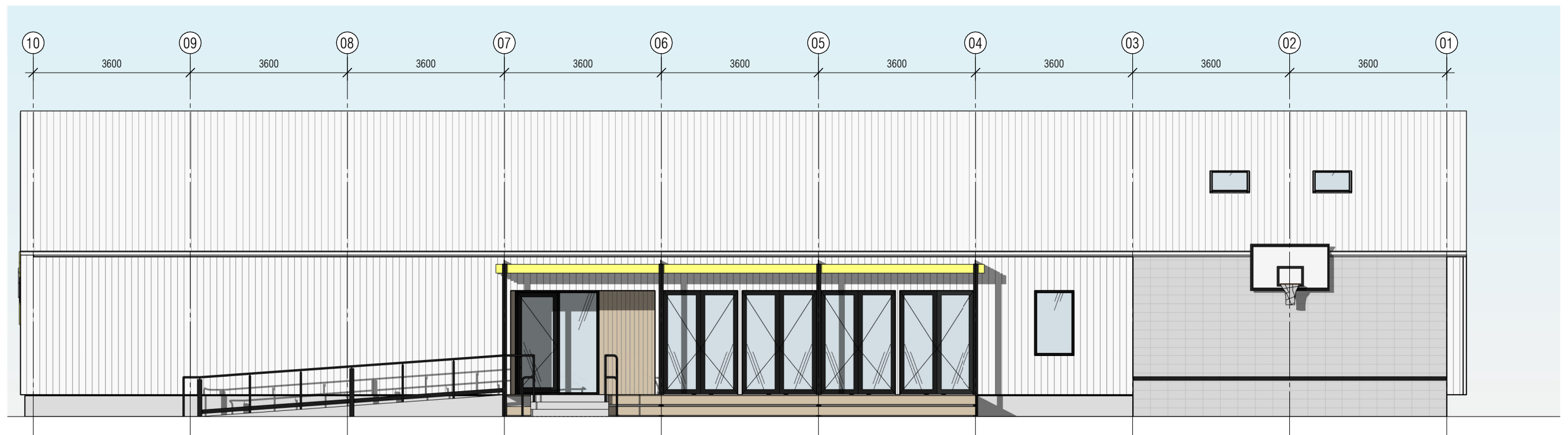
01 NORTH ELEVATION  
SCALE 1 : 100



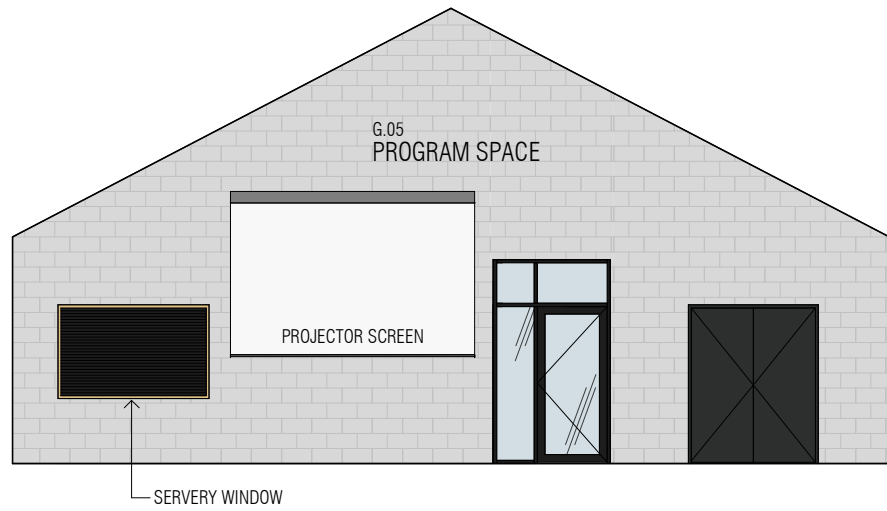
02 EAST ELEVATION  
SCALE 1 : 100



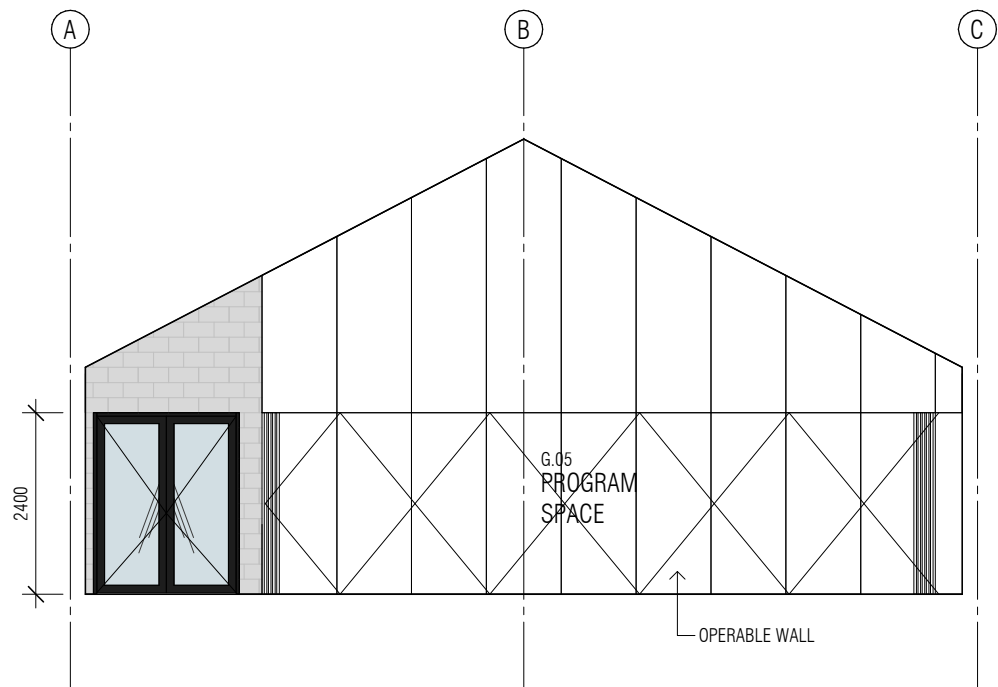
01 SOUTH ELEVATION  
SCALE 1:100



02 WEST ELEVATION  
SCALE 1:100



01 INTERNAL ELEVATION  
A201 SCALE 1 : 100



02 INTERNAL ELEVATION  
A201 SCALE 1 : 100

